

HABASHI DENTAL PRACTICE

176 Eynsham Drive, Abbey Wood, London, SE2 9PT tel: 0208 3120404, 0208 3120505

Dr NABIL HABASHI, Dr IOANNIS BOLIS, Dr RHYS OWEN, Dr ANDREW LIVINGSTONE, Dr NIKITAS PAPAKOSTAS

what more can we do for you



As well as our commitment to the NHS, we also offer a range of cosmetic private treatments to suit every pocket

- White fillings
- Tooth whitening
- Porcelain crowns and veneers
- Invisalign
- Implants

info

one of our aesthetic cases

replacing the old amalgam fillings with white ones

what more can we do for you

Composite "white" fillings

Dental composite bonding is a popular choice for fillings because the material can match the shade, translucency and even the texture of your own natural teeth and provides a much better result than old amalgam/silver fillings, which can be unsightly when you smile.

BEFORE



AFTER



The fillings were replaced gradually over a period of 1 month and the patient is now happy with the result

one of our aesthetic cases

placing porcelain crowns - BACK TEETH

what more can we do for you

Dental crowns are restorations that protect damaged, cracked or broken down teeth. A crown strengthens your existing, damaged tooth so as to preserve its functionality. Dental crowns are also commonly known as caps (because a crown sits over your existing tooth, covering the entire outer surface).

BEFORE



AFTER



We have an extensive range of materials to choose from when making your crown. We will help you find the best solution for your needs

one of our aesthetic cases

placing porecelain veneers - FRONT TEETH

Veneers are wafer-thin laminates or shells of tooth-coloured material (which can be either porcelain, ceramic or composite bonding material). They are “cemented” to the front surface of teeth to improve their cosmetic appearance.

what more can we do for you

BEFORE



AFTER



We use Knight Dental Design, a laboratory that has been repeatedly voted number 1 in the UK for aesthetic dentistry

what is invisalign

what more can we do for you

Invisalign is a revolutionary system for straightening crooked teeth and closing gaps between teeth. In many cases, Invisalign can get rid of the need for traditional metal-wire braces that have long been used in traditional orthodontic practice. The system utilises the latest in computerised technology and three-dimensional modelling to generate a series of clear, see-through aligners or “clear braces”. They are virtually unnoticeable, and are often referred to by many patients as “**invisible braces**”. The clear aligners are specially fabricated to fit your teeth exactly, and over time, they move your teeth into a position that gives you a natural-looking, straight smile



Why is Invisalign better than metal braces?

Comfort – metal braces are usually more painful and can cause irritation and inflammation of the gums and soft tissue. Although there may be slight discomfort when you start wearing Invisalign aligners, in general, most users find them very comfortable.

Convenience – this is probably one of the greatest advantages over traditional wire braces. You remove the aligners when you eat, thereby avoiding the problem of food getting trapped between wires and elastic bands. Invisalign also makes maintaining a good oral hygiene program much easier. With wire braces, cleaning your teeth is much more difficult – especially flossing between your teeth. The difficulty of flossing with metal braces means that most people will neglect this part of their cleaning, and this could lead to problems with bad breath, gum disease and tooth decay in the future.

Discreet – the aligners are virtually invisible to anyone unless they get very close to you, so hardly anyone will even notice that you are having treatment. This is one of the main reasons that has encouraged 1000s of adults to use the Invisalign system, as it won't cause any disruption in their lifestyle.

BEFORE



AFTER



what is an implant

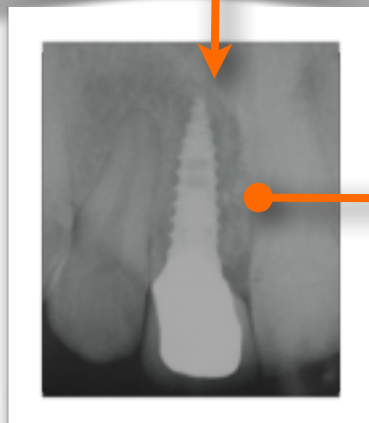
what more can we do for you

A dental implant is a small man-made titanium fixture that serves as the replacement for the root portion of a missing natural tooth in your mouth. The implant is placed in the bone of your upper or lower jaw. Your bone then heals tightly around this implant and the implant then serves as an anchor for your replacement tooth. Dental implants can be used to replace a single lost tooth or many missing teeth. Implant supported replacement teeth look, feel and function like natural teeth. Dental implants are a proven restorative option with a long clinical history. Dental implants preserve the integrity of your facial structure and reduce the inconvenience associated with tooth loss.

The effects of tooth loss are numerous and can be devastating. The loss of either a single tooth or total tooth loss can cause a lack of confidence and can affect every day life. People affected by tooth loss often find eating in public difficult and traumatic or are not confident about their smile. When teeth are lost your jaw bone actually sinks away, and from scientific research we know that wearing dentures accelerates this process. This in turn affects the muscle tone to the face reducing bone support for the lips and cheeks, consequently, the lips and lower part of face have collapsed producing an aging effect on the individuals appearance.

For individuals who wish to replace missing teeth, dental implants may be an effective long-term solution. Implants provide greater structural support and last longer than either bridges or dentures. Implants serve as the artificial root to which new teeth are bonded. They are typically constructed of titanium, a strong and safe material that effectively attaches to bone. The procedure to insert dental implants typically involve three steps: the implant insertion stage, osseointegration (the period of healing for the jawbone), and the attachment of the restoration or new tooth.

A case presentation



10 years ago the Upper Right Incisor was extracted due to a fracture (accident)

The implant was placed in April 2009 and after 4 months the crown was fitted, the patient is now very happy with his new smile



HABASHI DENTAL PRACTICE

176 Eynsham Drive, Abbey Wood, London, SE2 9PT tel: 0208 3120404, 0208 3120505

Dr NABIL HABASHI, Dr IOANNIS BOLIS, Dr RHYS OWEN, Dr ANDREW LIVINGSTONE, Dr NIKITAS PAPA KOSTAS

what more can we do for you

As well as our commitment to the NHS, we also offer a range of cosmetic private treatments to suit every pocket



- **White fillings from £60**

Dental composite bonding is a popular choice for fillings because the material can match the shade, translucency and even the texture of your own natural teeth and provides a much better result than old amalgam/silver fillings, which can be unsightly when you smile.

- **Tooth whitening £300**

As a person ages the adult teeth often become darker and stained by bacterial pigments, foodstuffs and smoking. At-home whitening is done with bleaching gel which is applied to the teeth using thin guard trays

- **Porcelain crowns, bridges and veneers from £350**

Dental crowns and veneers are restorations that protect damaged, cracked or broken down teeth. A crown strengthens your existing, damaged tooth so as to preserve its functionality. Dental crowns are also commonly known as caps (because a crown sits over your existing tooth, covering the entire outer surface).

- **Invisalign from £1800**

Invisalign is a revolutionary system for straightening crooked teeth and closing gaps between teeth. In many cases, Invisalign can get rid of the need for traditional metal-wire braces that have long been used in traditional orthodontic practice. The system utilises the latest in computerised technology and three-dimensional modelling to generate a series of clear, see-through aligners or "clear braces". They are virtually unnoticeable, and are often referred to by many patients as "invisible braces".

- **Implants from £1950 to include implant and crown**

A dental implant is a small man-made titanium fixture that serves as the replacement for the root portion of a missing natural tooth in your mouth. The implant is placed in the bone of your upper or lower jaw. Your bone then heals tightly around this implant and the implant then serves as an anchor for your replacement tooth.

info

Ask your dentist about any of these cosmetic procedures when you next have a check-up, and they will be happy to give you a precise cost for your teeth